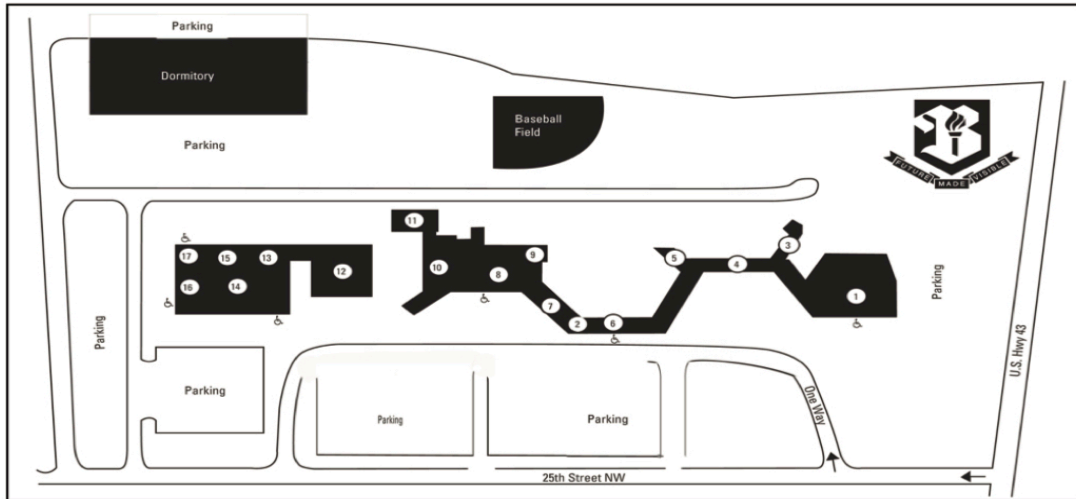


College Maps

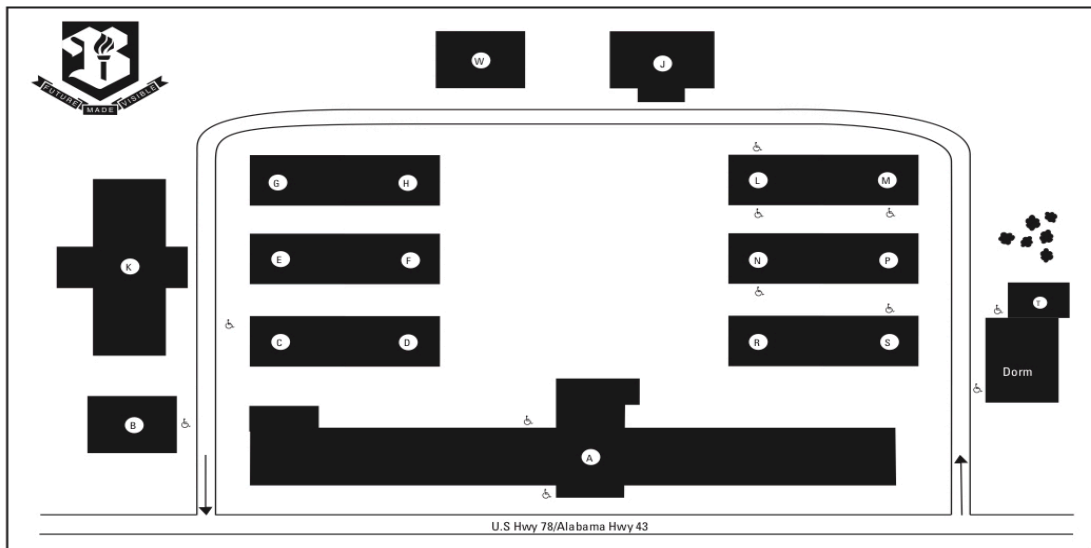
CAMPUS MAPS

FAYETTE CAMPUS - Fayette, AL



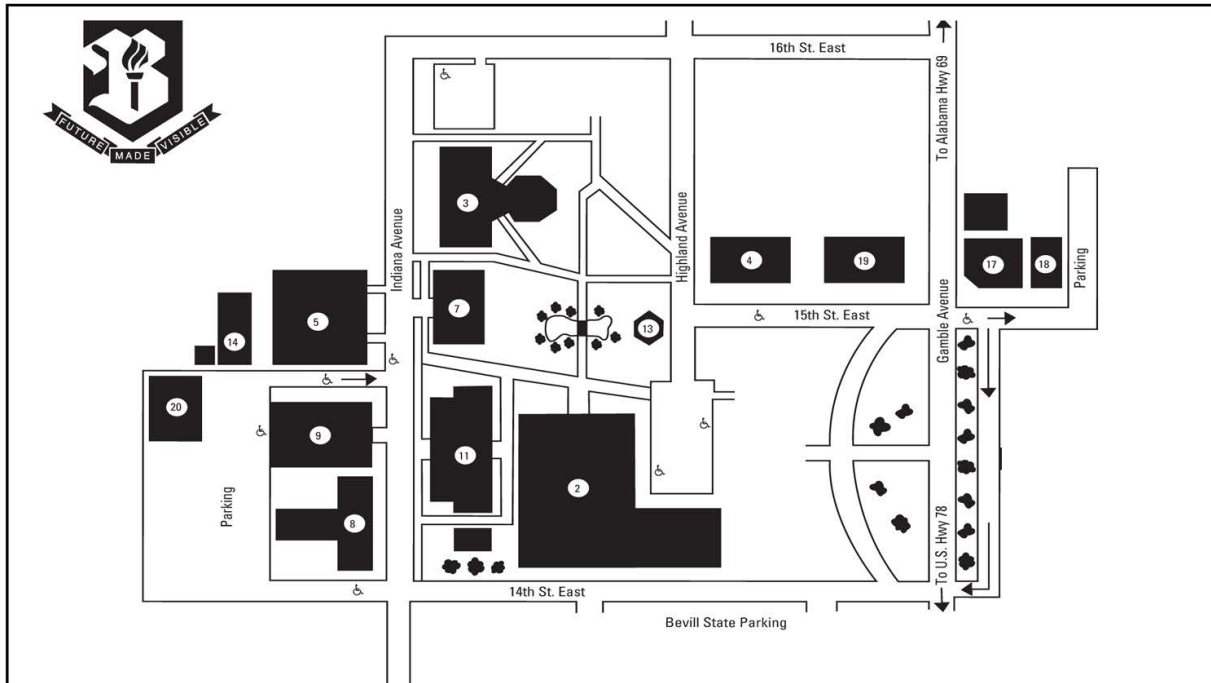
- | | | | |
|--------------------------------------|-------------------------------|---|--------------------------------|
| 1. Library/ Learning Resource Center | 5. Administrative Offices | 9. Bear's Den/Student Center
Business Office/Bookstore | 13. Adult Education classrooms |
| 2. Testing Center | 6. Office of Student Services | 10. Wellness Center | 14. Tom Bevell Center Bldg |
| 3. Science Wing | 7. Student Support Services | 11. Maintenance | 15. Alabama Career Center |
| 4. Classrooms | 8. Gymnasium | 12. Health Science Wing | 16. Earl McDonald Auditorium |
| | | | 17. Cafeteria |

HAMILTON CAMPUS - Hamilton, AL



- | | | | |
|------------------------------------|-------------------------------------|-----------------------------|-----------------------------------|
| Building A: Admin Services/Library | Building E: Air Conditioning | Building K: Health Sciences | Building R: Drafting |
| Building B: Bevell Building | Building F: Welding | Building L: Lecture Hall | Building S: Alabama Skills Center |
| Building C: Bookstore | Building G/H: Automotive Technology | Building M: Wellness Center | Building T: Dorm |
| Building D: Electronics | Building J: Cosmetology/Barbering | Building N/P: Machine Shop | Building W: Warehouse |

JASPER CAMPUS - Jasper, AL



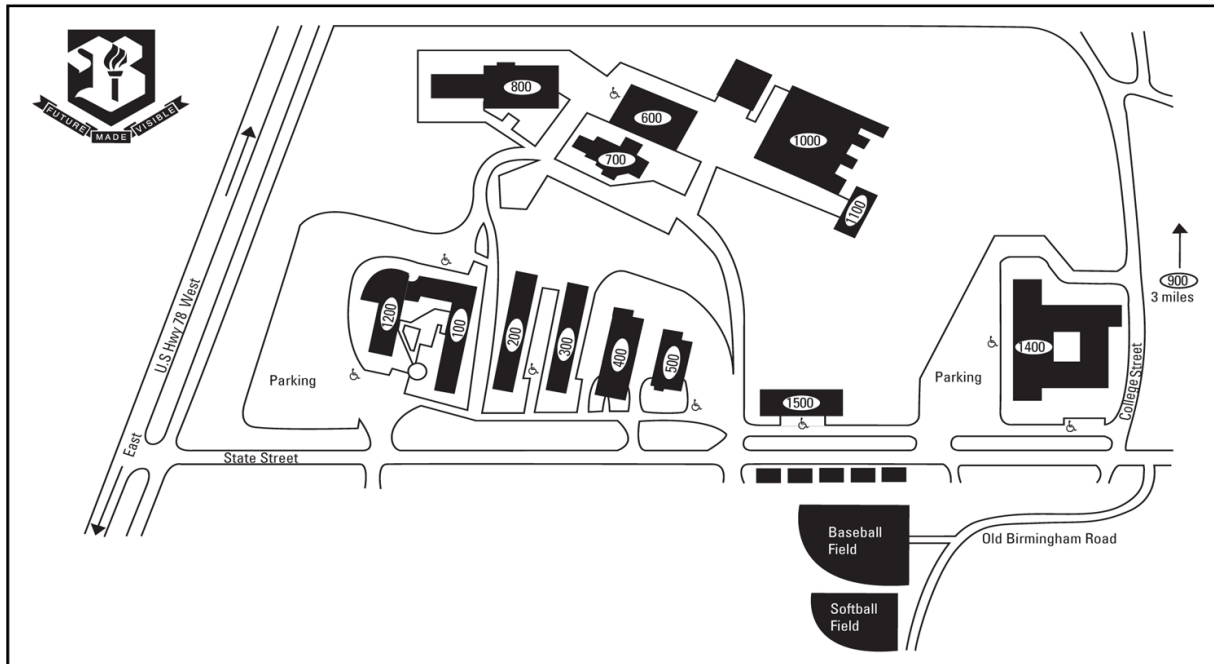
- 2. Wade Math & Science Building (H)
- 3. L. M. Walker Hall/Arts & Humanities (W)
- 4. Thornton Chapel (CH)
- 5. Glen R. Clem Gymnasium

- 7. Jesse Student Center/Bookstore
- 8. McCutcheon-Fair Hall
- 9. Rowland Education Center (R)

- 11. Irma Dilg Nicholson Library
- 12. L. M. Walker Hall Parking
- 13. Gazebo
- 14. Maintenance Building
- 15. Faculty/Staff Parking

- 16. Parking
- 17. Bevill Hall/Health Sciences (B)
- 18. Carl Hare Simulation Lab
- 19. Foundation House
- 20. Maintenance Storage

SUMITON CAMPUS - Sumiton, AL



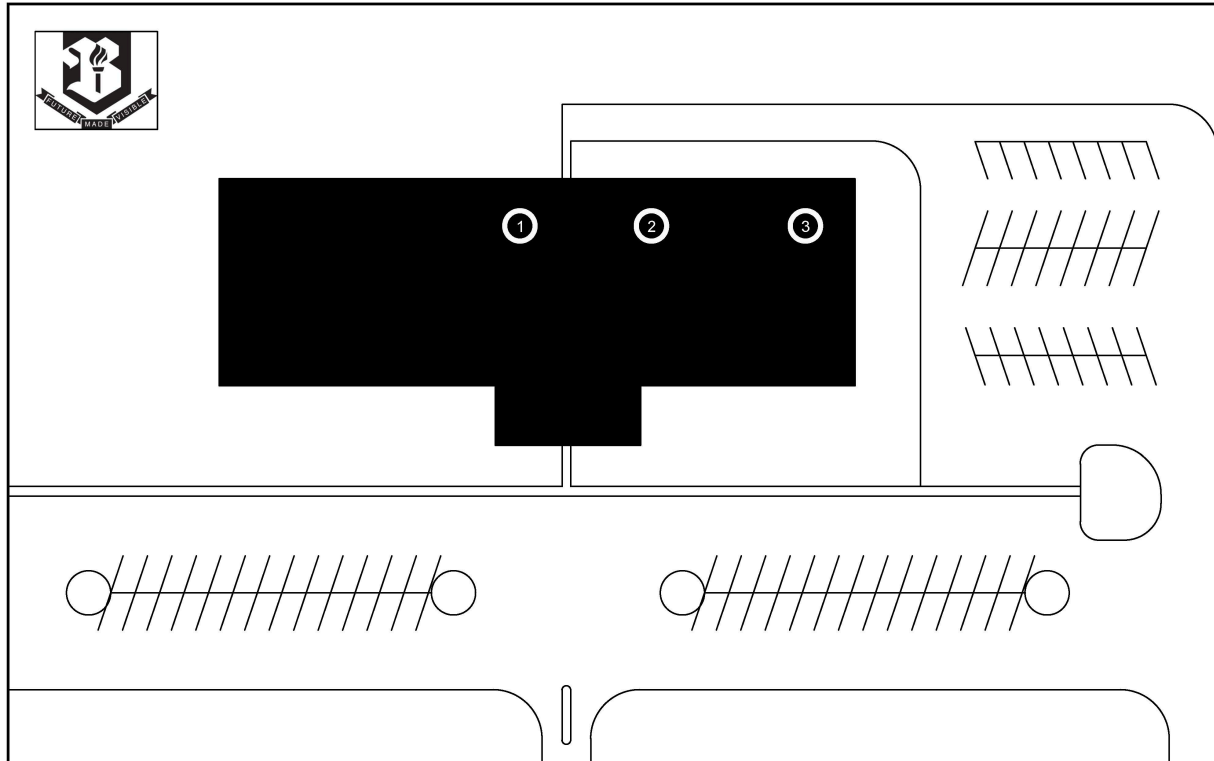
Bdg 100: Business & Office Administration
Computer Science
Computer Services
Cosmetology
Bdg 200: Bookstore
Business Office/Purchasing
Bdg 300: Electrical Systems Technology
Air Conditioning/Refrigeration Tech

Bdg 400: Auto Body Repair Tech
Bdg 500: Distance Education classroom
Bdg 600: Machine Tool Technology
Auto Tech, Adult Education
Bdg 700: Mining
Bdg 800: Welding Technology
Diesel Technology
Bdg 900: Truck Driving (Off Campus)

Bdg 1000: Mining Technology
Simulated Coal Mine
Bdg 1100: Warehouse & Maintenance
CDL Training
Bdg 1200: Administrative Offices/Services
Library/Learning Resource Center
Office of Student Services
Testing Center

Bdg 1400: Business & Industry Training
Drafting Technology
Science Laboratories
Cafeteria, Civic Dining Room
Exhibit Hall
Security Office
Bdg 1500: Health Sciences, Computer/Sci
Distance Education classroom

PICKENS CENTER - Carrollton, AL



1. ADMINISTRATIVE OFFICES
STUDENT SERVICES
BUSINESS OFFICE
BOOKSTORE

2. LIBRARY

3. STUDENT CENTER